

SPLIT ROCK LIGHTHOUSE STATE PARK

Overnight Parking Information

(updated September / 2024)

You must register and pay to have your vehicle parked within any Minnesota state park if your vehicle will be within the park after 10:00 p.m.

There are two types of Minnesota State Park parking permits:

- A **current yearly** Minnesota State Park permit (affixed to the lower passenger side of the front window). The cost is \$35.00 for a full year from the month of purchase.
- A **daily parking pass** for each night your vehicle will be in the park past 10:00 p.m. The daily cost is \$7.00.

The easiest way to pay is [online](#), or to arrive during the day while the park staff is available. If you arrive after hours, or find that there are no state park staff available to assist you, please follow these instructions.

Self-Service Instructions for Parking at Split Rock Lighthouse State Park

1. **Find the self-service kiosk building where campers register:**

At Hwy. 61 (mile post 49.0) turn right at the main entrance road. About 200 yards up the (quite steep) hill is the main building where campers and visitors register. To help mark the spot, they have a portable stop sign in the middle of the entry road directly in front of the building.

2. **Fill out the Minnesota State Parks payment envelope:**

Envelopes are available at the registration building. If you purchase a year-round permit, they will mail it to you. You can pay by cash, check, or credit card (fill out the credit card information on the envelope).

Fill out your mailing address in the space provided. Write your vehicle license plate number on both the envelope and the rip-off tab. Put the rip-off tab (proof of purchase) on the dashboard of your vehicle. Put your payment in the envelope and place it in the night deposit box at the self-service kiosk building.

3. **What to do if you already have a yearly state park permit:**

You **must still** fill out your vehicle information on the envelope. Put the rip-off tab receipt on the dashboard of your vehicle and put the envelope in the night deposit box at the registration building. No additional payment is due.

4. **Where to park and wait for us to pick you up:**

Continue past the stop sign about 35 yards and turn right down a long hill, where a sign at the top will read "Campground, Picnic Area, Trail Center" parking lots. We pick you up at the parking lot in the middle of the 3 lots. It's marked with a **Pebble Beach** sign.

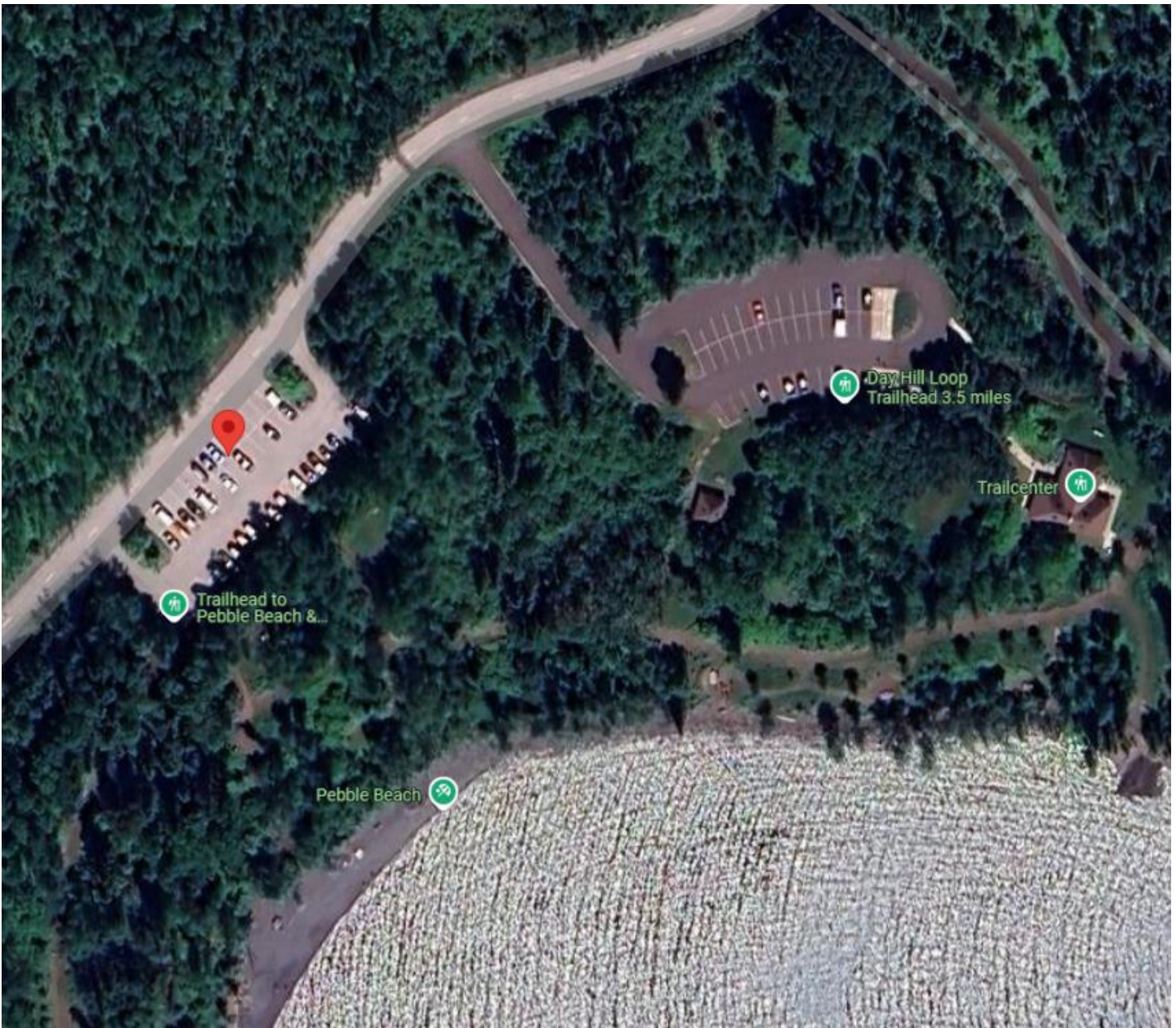
I have a couple screen shots from Google Maps on the next two pages. The red pin is the parking lot where we will pick you up.

Here are the GPS coordinates for the parking lot: [47.198746,-91.377679](#)

Clicking on this GPS coordinate link will bring you to Google Maps.



Satellite view of Split Rock State Park. The red pin is the parking lot where we will pick you up. Notice that it's about 11 o'clock from the Pebble Beach pin.



Here is a closeup view of the parking lot where we pick you up at Split Rock State Park. The **red pin** on the parking lot on the left is the correct parking lot.

Cell phone signals here are rare to non-existent, so if you are waiting in the wrong parking lot, we likely won't be able to call you. We only go to this parking lot for confirmed reservations. Please be ready to board prior to our arrival. Thank you!

For more information, visit the Minnesota State Park website's [Split Rock Lighthouse State Park](#) page.